

KEMTILE WIN TWO PRESTIGIOUS TILE INDUSTRY AWARDS

The Tile Association Awards are the "Oscars" of the wall and floor tile industry and this year Kemtile received two prestigious awards and were finalists in a third.

Excellence in Tile Contracting is given to only one contracting company each year and, as such, demonstrates that the judges consider the recipient to be the best contracting company in UK and Eire in that year. TTA Chairman Ashley Heath congratulated Kemtile saying, "It is really good to see a company working in one of the most specialist areas of our industry receiving this award. Over recent years tile has been used less and less in the areas where it actually delivers the

most benefits. Kemtile continue to champion the use of ceramic flooring in aggressive environments where hygiene is of primary concern. That they also won the award for Best Technical Use of Tile in a Construction Contract is a further testament to the technical skills within this well established company".

Kemtile Directors Jamie Cook and Stephen Westley were delighted with this recognition from within the industry saying that it is Kemtile's ability to offer both ceramic and seamless flooring with the very best products, Ucrete and Kagetec, which enables them to win so many tiling contracts. "We offer both systems without bias and in some cases



ceramic flooring is the most cost effective solution and delivers genuine benefits. For other contracts seamless flooring is the best option, but we believe we are one of very few companies that can still offer this choice". (Continued overleaf...)

SEAMLESS SOLUTION FOR DAIRYGOLD



The Dairygold and Haslington Cheese Co Ltd in Crewe process a wide range of shredded, grated, cubed, sliced and diced cheeses. Kemtile have just completed their new extension. In the Cheese Grater Area Kemtile constructed an underground drainage system, a new grease trap interceptor, laid 600 square metres of BASF seamless resin flooring and installed stainless steel kerbs and drains. For more details of this project see the centre pages.

KEMTILE WIN TWO TTA AWARDS

(Continued from front page)



Excellence in Tile Contracting

Kemtile won this Award because they ensure that their customers are completely satisfied and that their projects have the maximum possible design life; Kemtile have excellent site management skills, retain a dedicated Health and Safety Consultant and employ a skilled workforce. Kemtile have worked for almost every major brand in the food and drink industry.

Best Technical Use of Tile in a Construction Contract

This Award considers the projects where the end use demanded specialist tiles or tile fixing skills. It is the functionality and fixing technique that counts for this Award. Kemtile won the award for work at Uniq, Northampton, where they were not only tiling contractors, but helped develop the product used with UK tile manufacturers Pilkington's Tile Group Plc. Kemtile lay more tiled floors in food factories every year than any other company in the UK.



Best Use of Tile in a Small Construction Contract

Kemtile were finalists for work at Coca Cola, East Kilbride. As part of the submission Paul Dolan, Technical Manager, Coca Cola Enterprises Ltd said, "Kemtile have provided us with a first class service. The high standards Kemtile set have played a major part in the transformation of the building."

UNIQ NORTHAMPTON

Kemtile were main contractor to the project that converted a warehouse into a sandwich manufacturing plant for European chilled convenience food manufacturer Uniq. This state-of-the-art manufacturing facility at Northampton now makes sandwiches for Marks & Spencer and British Airways amongst others.

Kemtile installed underground drainage, stainless steel kerbs and drains and both ceramic and seamless flooring. Using the Kagetec BS system, Kemtile laid 1,200 square metres of Pilkington's Dorset Hexagon, colour Sandstorm with R11 granular finish for additional slip resistance.

Since completing the award winning tiling project on this site, Kemtile have installed a specialist hygienic floor to another area. In this case it was a seamless floor using 1,300 square metres of Ucrete DP20 9mm thick in yellow. The floor was laid in four phases during periods of shutdown and working behind screens during production time. The Kemtile operatives had to schedule different stages of the work to suit shutdown and production schedules.

Once again working under CDM Regulations for Health and Safety the old floor was removed and drainage channels were saw cut into the substrate. Pipework and gullies were installed and polymer concrete screed was laid to falls.

"Kemtile had a good on site manager who has controlled things really well. Everything went according to plan, we had to make some changes, but these were accommodated."

Tom Caulfield, Uniq Northampton



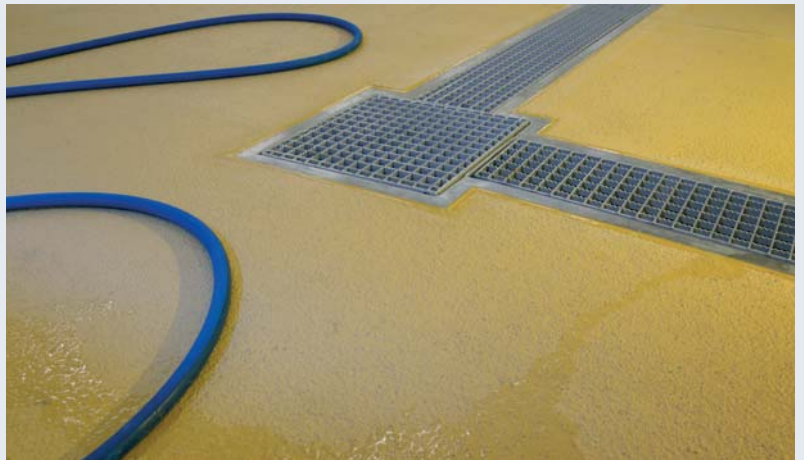
CERAMIC OR SEAMLESS?

Both flooring systems have their advantages and, if quality products are used and installed correctly, both have an excellent design life.

As a general rule, where existing floors have the correct falls to drains, then Kemtile would recommend using Ucrete seamless flooring as it is cheaper. If the existing floor is flat then they would recommend Kagetec ceramic flooring as falls can be incorporated into the work, making that the less expensive option.

If it is anticipated that plant may be moved within the life of the floor then ceramic may again prove the best option. With Kemtile you don't have to make the decision until you have all the information presented to you in a way that makes it easy to compare the alternatives.

Kemtile can offer the best of both worlds!!



KEMTILE AT NÖM

Austrian dairy NÖM has commissioned a 20 acre industrial dairy in Telford. This new £40m plant represents one of the largest Austrian investments in the UK and will strengthen NÖM's position as one of Europe's leading dairies.

Working for Clegg Food Projects, Kemtile, in close co-operation with Van Koetsveld & Grimberg GmbH, laid 3,500 square metres of ceramic flooring to NÖM's very exacting standards.

The system used was Kagetec AR; utilising tiles with a crushing strength of 50 kN/m² fixed directly onto a concrete slab with a crushing strength of 35 kN/m². Many similar installations utilise a conventional vibration fixing method where the tiles are laid on a semi-dry sand/cement base. These systems are extremely robust but the weakest point is the screed which is between the structural slab and the tiling system. The NÖM preferred method demands the elimination of screed but that means that the slabs had to be laid to very tight tolerances.

Kemtile contracted concreting specialists to lay the 200mm thick reinforced slabs to the required levels and to extra fine tolerance falls. The slabs were then ground to ensure they were within extra fine tolerance and left to cure for three weeks. The slabs were then shot blasted to provide a key and the fully vitrified hexagonal tiles were laid straight onto the slab using Kagetec epoxy resin. The tiles were grouted with Kagetec low viscosity epoxy resin grout.

Wiedemann stainless steel drains, channels and gullies were used throughout the project. The Wiedemann range is of the highest quality. The company was founded in 1945 as an assembly company for dairies and developed their first drain as a specific response to a need in the industry. Kemtile also created concrete channels and gullies.



"This was an extremely difficult installation and Kemtile completed it with their usual expertise and attention to detail. The NÖM specification demanded a high level of skill in its application. The close association between Kemtile and Van Koetsveld & Grimberg has enabled them to complete a very technical and precise tiling project. The floor was finished to our complete satisfaction to budget and on time".

**Stephen Giltrap,
MD Clegg Food Projects Limited**



KEMTILE – YOUR ONE STOP SHOP FOR A NEW MANUFACTURING FACILITY

Kemtile are much more than just flooring contractors. They install drainage, provide wall finishes, lay screeds and construct structural slabs. They can also work as principal contractor, but at Dairy Gold they erected the whole building! Kemtile created their new extension and, working under CDM Regulations, were responsible for the Health and Safety of everyone on site.

A mezzanine floor was moved from one area of the manufacturing space to another. It was jacked up on rollers, moved

and was then adapted to fit its new location complete with new staircases. Kemtile constructed the concrete slab and foundations and erected a nine metre high steel frame structure, with 150mm thick PIR external wall panels to match the existing building. They added a roof complete with rainwater gutters and drains.

Inside, Kemtile created new falls to the floors with a concrete screed, installed ceiling panels six metres off the finished floor level and created a steel mezzanine area as a bay for cheese pallets to be loaded onto wagons for distribution. This area was constructed complete with loading docks and dock levellers. Door openings were made to join the new building to the existing one and the white wall panelling was matched to the existing cladding where the new building joins the original. Kemtile also created a new entrance to the site with pathways, gates, gardens and line markings for parking.

"Good reliable service. The CDM and the fact that Kemtile were running the job was the reason why Kemtile got it the first place. The project was so well organised from a contractual point of view, I had no qualms about it, I just left them to get on with it. The finish says it all. Everyone here is over the moon with how the project has come off; from the building work to the floor itself. If I had any concerns, I had only to contact Jamie Cook and everything was dealt with very swiftly."

Chris Lea, Engineering Manager, Dairygold

CERAMIC FLOORS WITH KAGETEC

Kagetec tiling systems are engineered in Germany by Van Koetsveld & Grimberg GmbH. Kemtile are the exclusive UK applicator for Kagetec Tiling Systems.



Kagetec basic system (BS)

At least as good if not superior to any vibration fixed tiling system available in the UK.

Kagetec GFK

This product is specifically developed for high thermal stress areas. The combination of vibration tiling and a plastic mesh reinforced epoxy membrane/adhesive between the tiles and the bedding medium makes GFK one of the toughest floors available.



WEBSITE UPDATE www.kemtile.co.uk

The Kemtile website has had a facelift. It's fresh, it's clean, it's new and it has all the features and information you would expect from one of the leading suppliers of hygienic flooring to the food industry. We have just added new drawings for Wiedemann drainage to the technical library.

Kagetec AR

Able to withstand the extremes of thermal, mechanical and chemical stresses. Laid directly onto power floated concrete slabs.

Kagetec RP

Existing floors are prepared and overlaid.

Kagetec AS

Anti-static. Specifically for use in industries where build up of static electricity must be avoided such as pharmaceutical or electronics industries.

30 YEARS ON

preparing for December 2009

Founded in December 1979, Kemtile have 30 years experience in installing specialist floor and wall finishes for food industry applications where the very highest hygiene standards are demanded. Kemtile have laid more Ucrete floors in the UK than any other company every year for the last five years. They are also exclusive UK and Ireland applicator for Kagetec tiling systems.

KEMTILE & THE WORLD'S LARGEST CHEMICAL COMPANY BASF BRING YOU UCURETE POLYURETHANE SEAMLESS FLOORING

Kemtile has been approved Ucrete applicators longer than any other company. Ucrete is the original, and best, high performance Polyurethane Concrete, developed more than 30 years ago in Europe as the answer to the most demanding environments in industry.

UCURETE UD200

A 6-9mm thick polyurethane concrete flooring used principally for the food industry.



UCURETE DP

A suite of products providing defined, consistent surface profiles with three different surface textures. UCURETE DP is dense, impervious, and resistant to a wide range of temperatures, chemicals and impact.

UCURETE HPQ

An anti-slip quartz finished, medium duty 4-6mm flooring.

UCURETE MF

A 4-6mm medium duty, smooth finish polyurethane concrete flooring. Also available in anti-static/conductive grade.

FAST TRACK

Ucrete can be laid directly onto seven day old concrete slabs without the need for special primers. Kemtile have recently been installing floors where concrete screeds or structural slabs are laid to fine tolerance falls. The pumped concrete slabs can be laid very quickly and topped with Ucrete products almost immediately. In larger areas this system is much quicker than site mixing polymer concrete screeds. It also has Quality Control advantages and can incorporate a new DPM if required.

"Kemtile have installed UCURETE Heavy Duty Polyurethane Resin for many major Blue Chip companies who specify UCURETE on a world basis. UCURETE is only installed by Licensed Specialist Resin Flooring Contractors such as Kemtile who have skilled management and operatives and have the ability to work within the strict Health and Safety regimes and requirements of a Food or Beverage manufacturing facility. Kemtile realise that it is not the cost of installation which is a priority to their clients but the cost of life of a floor. UCURETE is guaranteed by BASF for 10 years."
Ian Scriven, Regional Manager, Performance Flooring England/Wales, BASF Construction Chemicals (UK) Ltd.