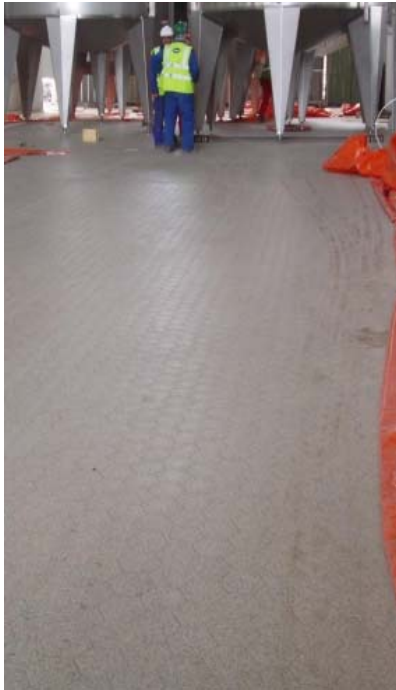


## NÖM's The Word at Kemtile



Austrian dairy NÖM has commissioned a 20-acre industrial dairy in Telford. This new £40m plant represents one of the largest Austrian investments in the UK and will strengthen NÖM's position as one of Europe's leading dairies.

Working for Clegg Food Projects, Kemtile, in close co-operation with Van Koetsveld & Grimberg GmbH, laid 3,500 square metres of ceramic flooring to NÖM's very exacting standards.

The system used was Kagetec AR; utilising tiles with a crushing strength of 50 kN/m<sup>2</sup> fixed directly onto a concrete slab with a crushing strength of 35 kN/m<sup>2</sup>. Many similar

installations utilise a conventional vibration fixing method where the tiles are laid on a semi-dry polymer sand/cement base. These systems are extremely robust but the weakest point is the screed which is between the structural slab and the tiling system. The Nom preferred method demands the elimination of screed but that means that the slabs had to be laid to very tight tolerances.

Kemtile worked closely with the concreting specialists on the laying of 200mm thick reinforced slab to falls. The slabs were then ground to ensure they were within extra fine tolerance and left to cure for three weeks. The slabs were then shot blasted to provide a key and the fully vitrified hexagonal tiles were laid straight onto the slab using epoxy resin.

Wiedemann stainless steel drains, channels and gullies were used throughout the project. The Wiedemann range is of the highest quality. The company was founded in 1945 as an assembly company for dairies and developed their first drain as a response to a need in the industry.

*"This was an extremely difficult installation and Kemtile completed it with their usual expertise and attention to detail. The NÖM specification demanded a high level of skill in its application. The close association between Kemtile and Van Koetsveld & Grimberg has enabled them to*

*complete a very technical and precise tiling project. The floor was completed to our complete satisfaction to budget and on time".* Stephen Giltrap, MD  
Clegg Food Projects Limited.

Kemtile are highly experienced in the food and drink industry, they understand the way it works and know instinctively exactly what is needed to complete each individual project to the customer's satisfaction. Kemtile have excellent site management skills, retain a dedicated Health and Safety Consultant and employ a skilled workforce.

Kemtile have worked for almost every major brand in the food and drink industry. They understand this very exacting industry, respect its constraints and appreciate its specific needs

**>>ENDS<<**

414 words excluding headline

This press release was issued on 21st December 2008 on behalf of Kemtile Ltd by JBK Marketing Limited. For further information email [judi@jbkmarketing.co.uk](mailto:judi@jbkmarketing.co.uk)