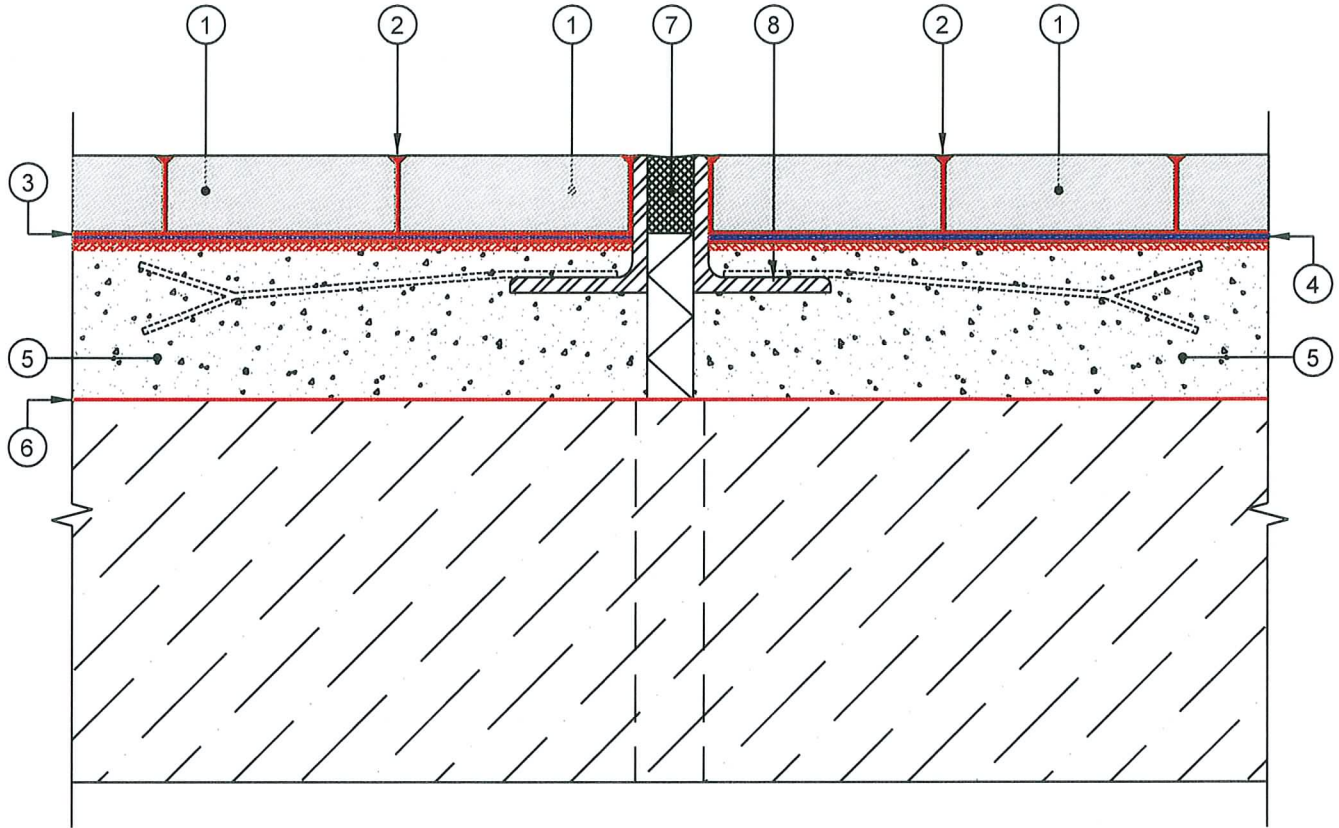


DO NOT SCALE

KAGETEC GFK SYSTEM EXPANSION JOINT (WITH ANGLE)



CROSS SECTION

No.	DESCRIPTION
1	KAGETEC HEXAGONAL FULLY VITRIFIED TILE
2	KAGETEC EPOXY GROUT (OPTIONAL MICROBAN)
3	KAGETEC EPOXY RESIN (ADHESIVE / SEALING)
4	KAGETEC PLASTIC REINFORCING MESH
5	KAGETEC RESIN MODIFIED FIBRE SCREED
6	KAGETEC RESIN (ADHESIVE)
7	THERMOPLASTIC EXPANSION JOINT
8	STAINLESS STEEL ANGLE



Hygienic Flooring Solutions

Unit C3, Taylor Business Park,
Warrington Road, Risley,
Warrington, Cheshire
WA3 6BL

Tel: 01925 763045
Fax: 01925 763381
email: all@kemtyle.co.uk
web site: www.kemtyle.co.uk

Rev	By	Description	Date
Title: EXPANSION JOINT DETAIL (WITH STEEL ANGLE)			
Project:			
Client:			
Drawn By: C Halsall		Checked By: I Ferguson	
Date: 25/02/02		Date: 25/02/02	
Drg No. KTEC - 002			Scale: N.T.S. © A4
			Rev