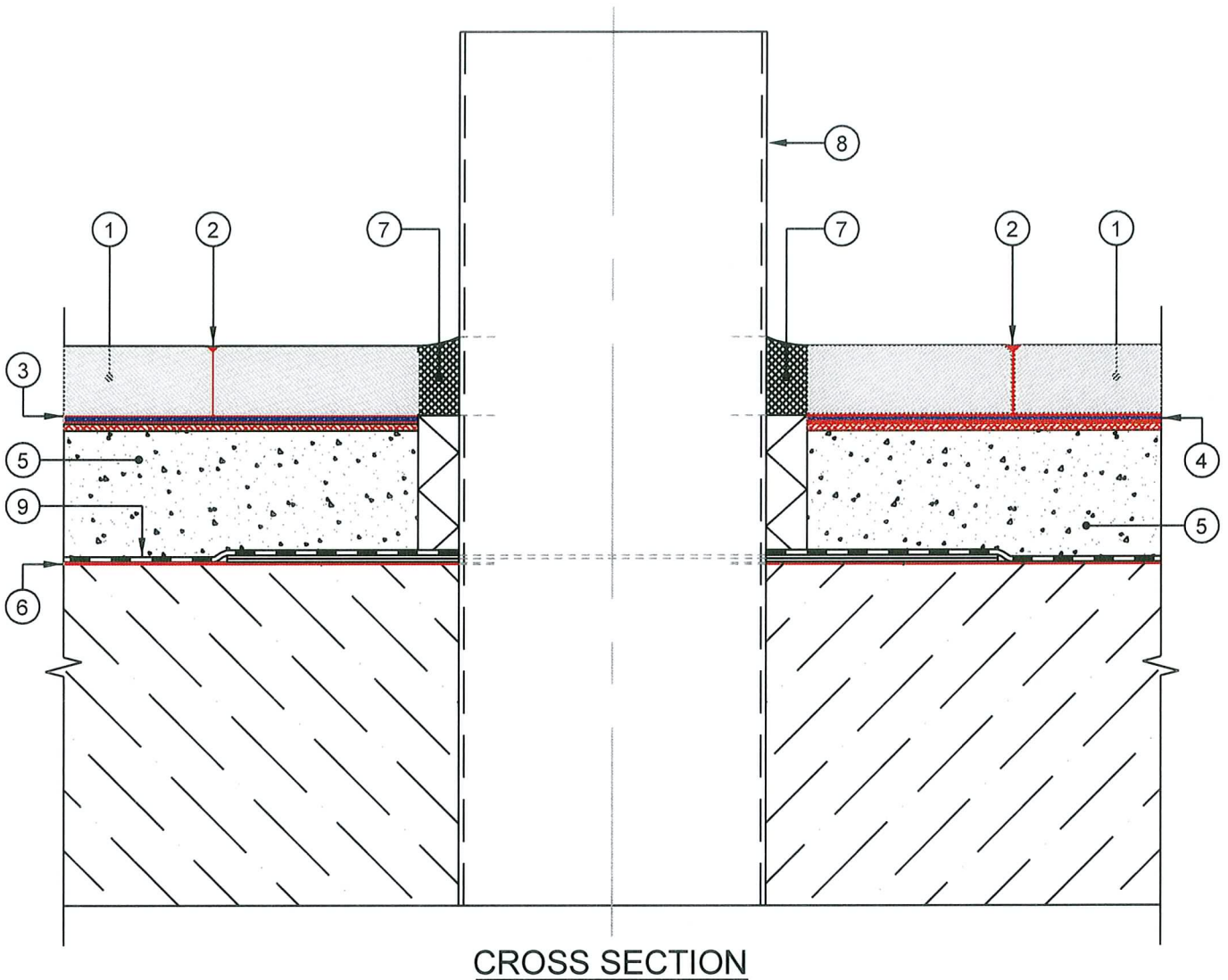


DO NOT SCALE

## KAGETEC GFK SYSTEM PIPE ENTRANCE WITH ACID RESISTANT MEMBRANE



**CROSS SECTION**

No.	DESCRIPTION
1	KAGETEC HEXAGONAL FULLY VITRIFIED TILE
2	KAGETEC EPOXY GROUT (OPTIONAL MICROBAN)
3	KAGETEC EPOXY RESIN (ADHESIVE / SEALING)
4	KAGETEC PLASTIC REINFORCING MESH
5	KAGETEC RESIN MODIFIED FIBRE SCREED
6	KAGETEC RESIN (ADHESIVE)
7	THERMOPLASTIC EXPANSION JOINT
8	PIPE ENTRANCE
9	KAGETEC ACID RESISTANT MEMBRANE



Hygienic Flooring Solutions

Unit C3, Taylor Business Park,  
Warrington Road, Risley,  
Warrington, Cheshire  
WA3 6BL

Tel: 01925 763045  
Fax: 01925 763381  
email: [all@kemtyle.co.uk](mailto:all@kemtyle.co.uk)  
web site: [www.kemtyle.co.uk](http://www.kemtyle.co.uk)

Rev	By	Description	Date
Title: PIPE ENTRANCE WITH ACID RESISTANT MEMBRANE DETAIL			
Project:			
Client:			
Drawn By: C Halsall		Checked By: I Ferguson	
Date: 25/02/02		Date: 25/02/02	
Drg No. KTEC - 007		Scale: N.T.S. © A4	
		Rev	